



***AIR EVAC LIFETEAM***<sup>®</sup>

# **Saline Co. HEMS LZs**

**Prepared for Saline Co E-911, EMS, Fire and Law Enforcement**

- **Saline Co. LZ #1**

**Fitzgibbon Hospital (N 39°05.53  
W 093°12.72**

- **Saline Co. LZ #2**

**Marshall Memorial Airport (N  
39°05.54 W 093°11.57**

- **Saline Co. LZ #3**

**Saline Co Sheriff Dept. Helipad  
(N 39°06.98 W 093°13.42**

- **Saline Co. LZ #4**

Arrow Rock LZ (N 39°03.54 W  
092°56.33

- **Saline Co. LZ # 5**

Miami School LZ (N 39°17.64 W  
093°1

- **Saline Co. LZ #6**

Blackburn LZ (N 39°06.04 W  
093°29.06

- **Saline Co. LZ #7**

Malta Bend/MidMo Energy LZ (N  
39°11.71 W 093°23.06

- **Saline Co. LZ #9**

Marshall Junction (N 39°58.48  
W 093°12.34

- **Saline Co. LZ #10**

Slater Airport (N 39°13.61 W  
093°04.27)

- **Saline Co. LZ #11**

Slater Clinic (N 39°13.07 W  
093°03.98)

- **Saline Co. LZ #12**

I-70 Medical Center (N 39°58.58  
W 093°24.72)

- **Saline Co. LZ #13**

Hardeman School (N 39°05.42  
W 093°00.65)

- **Saline Co. LZ #14**

I-70 and J Highway (N  $38^{\circ}57.31$   
W  $093^{\circ}05.27$ )

- **Saline Co. LZ #15**

Nelson, MO (N  $39^{\circ}59.60$  W  
 $093^{\circ}01.74$ )

- **Saline Co. LZ #16**

Blackburn Railroad (N  $39^{\circ}06.18$   
W  $093^{\circ}29.05$ )

- **Saline Co. LZ #17**

Mt. Leonard (N 39°07.37 W  
093°23.38

- **Saline Co. LZ #18**

Blackburn Legion Field (N  
39°06.11 W 093°28.73

# Saline Co. LZ #1

Fitzgibbon Hospital (N 39°05.53 W 093°12.72)

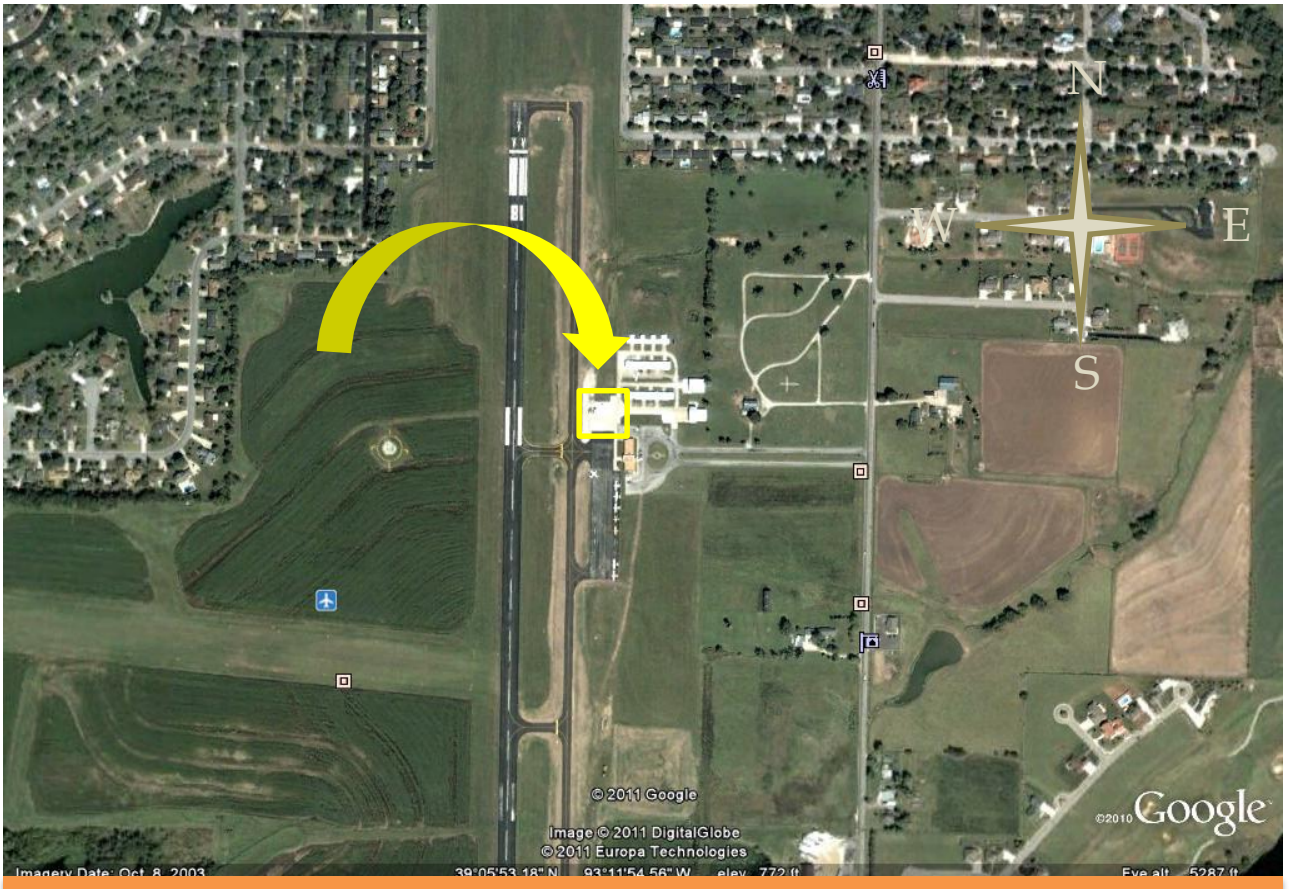


Best Approach	Northeast, west, or south
Obstacles	100' tower W of pad, light poles N, trees S
Surface	Concrete helipads X 2
Notes	Marshall airport 1 mile east



# Saline Co. LZ #2

Marshall Memorial Airport (N 39°05.54 W 093°11.57)



Best Approach	North, south or east
Obstacles	Buildings east
Surface	Concrete apron
Notes	Land north end of apron. EMS access through gate.

# Saline Co. LZ #3

Saline Co Sheriff Dept. Helipad (N 39°06.98 W 093°13.42)



Northeast view

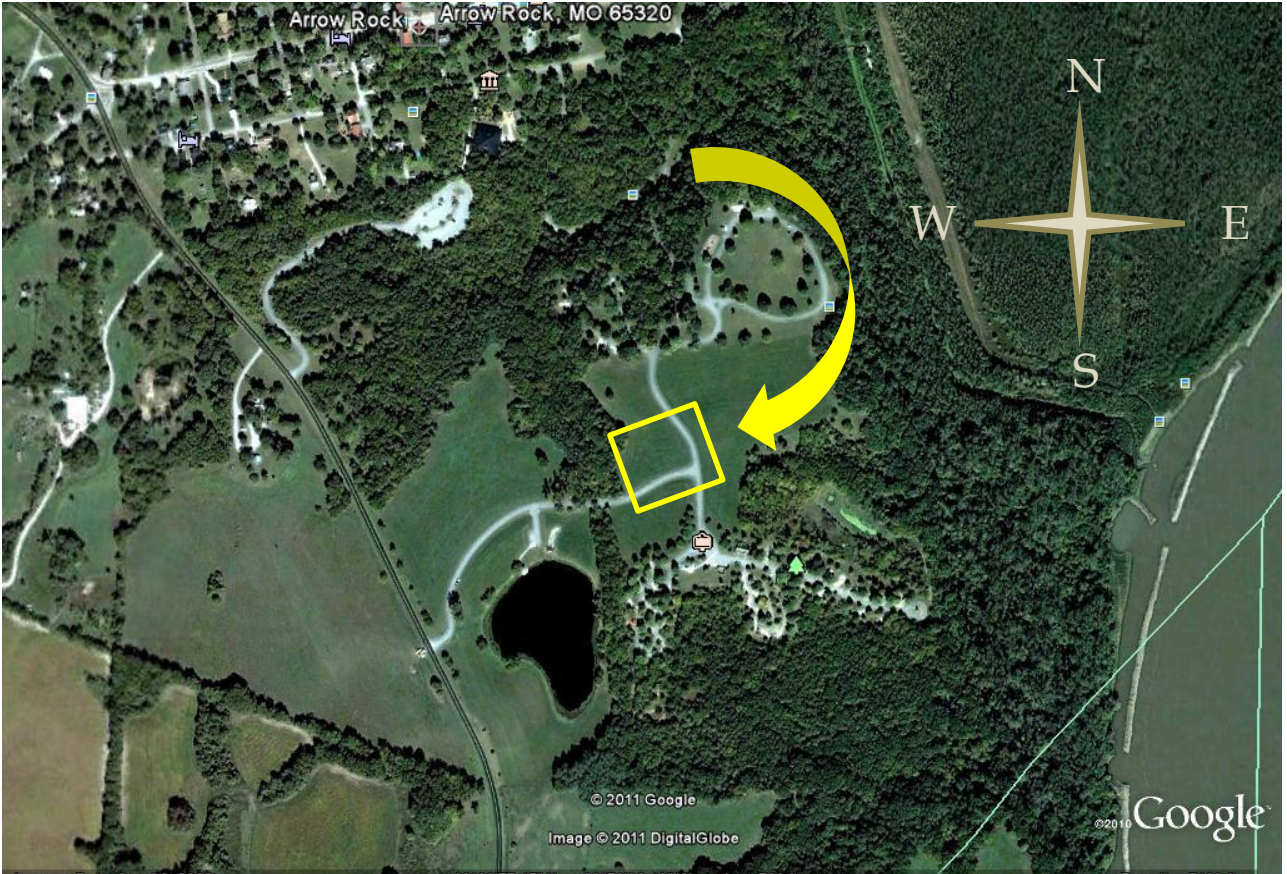


Best Approach	East/west
Obstacles	E/W wires along 20 Hwy, 30' antenna near bldg
Surface	Concrete
Notes	Helipad next to west end of parking lot



# Saline Co. LZ #4

Arrow Rock LZ (N 39°03.54 W 092°56.33)



## South View

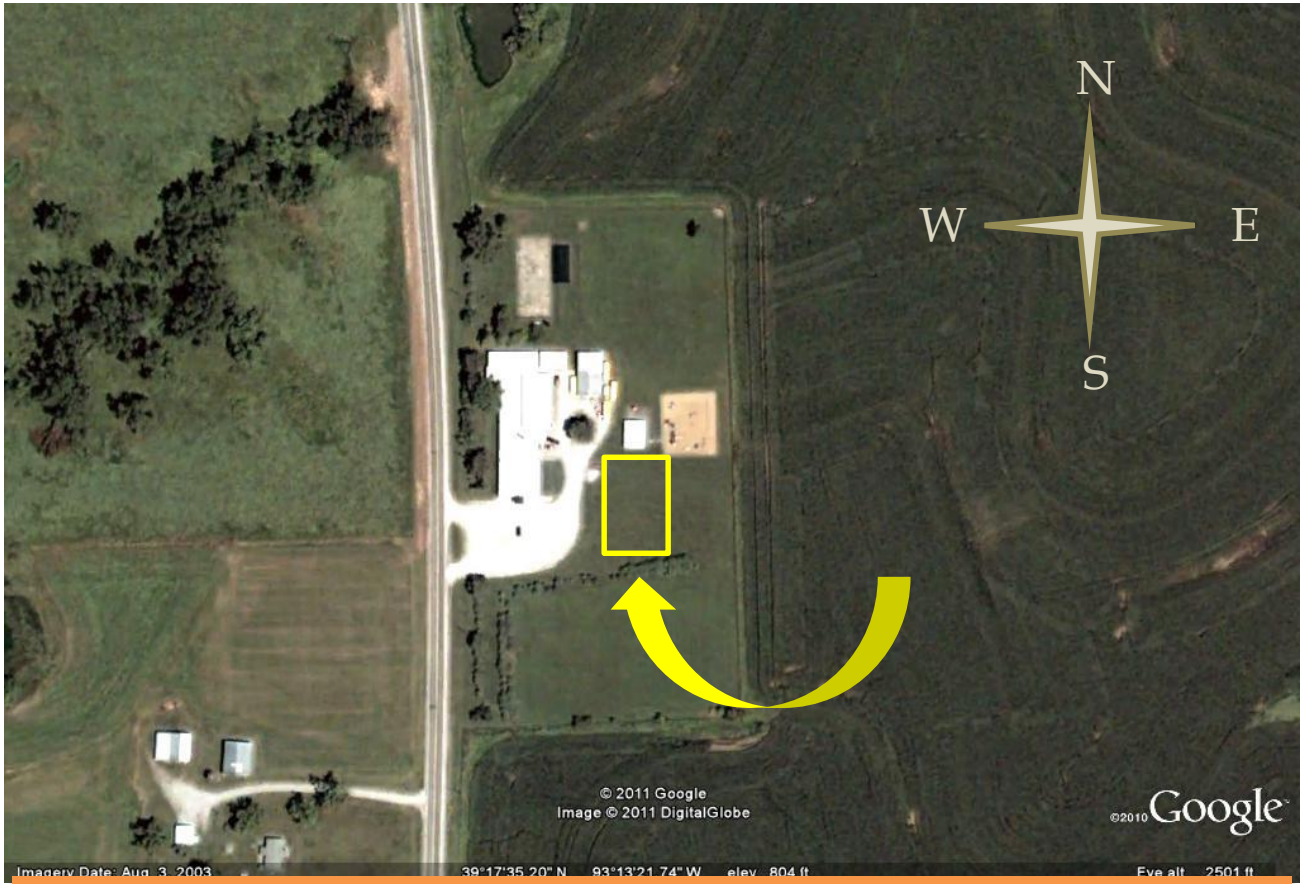


Best Approach	North/south or southwest
Obstacles	Trees west
Surface	Grass or asphalt (road)
Notes	State park near access roads to lake and 41 Hwy



# Saline Co. LZ # 5

Miami School LZ (N 39°17.64 W 093°13.35)



**West View**



**East View**



Best Approach	East/West
Obstacles	Trees south, Playground equipment north
Surface	Grass
Notes	



# Saline Co. LZ #6

Blackburn LZ (N 39°06.04 W 093°29.06)

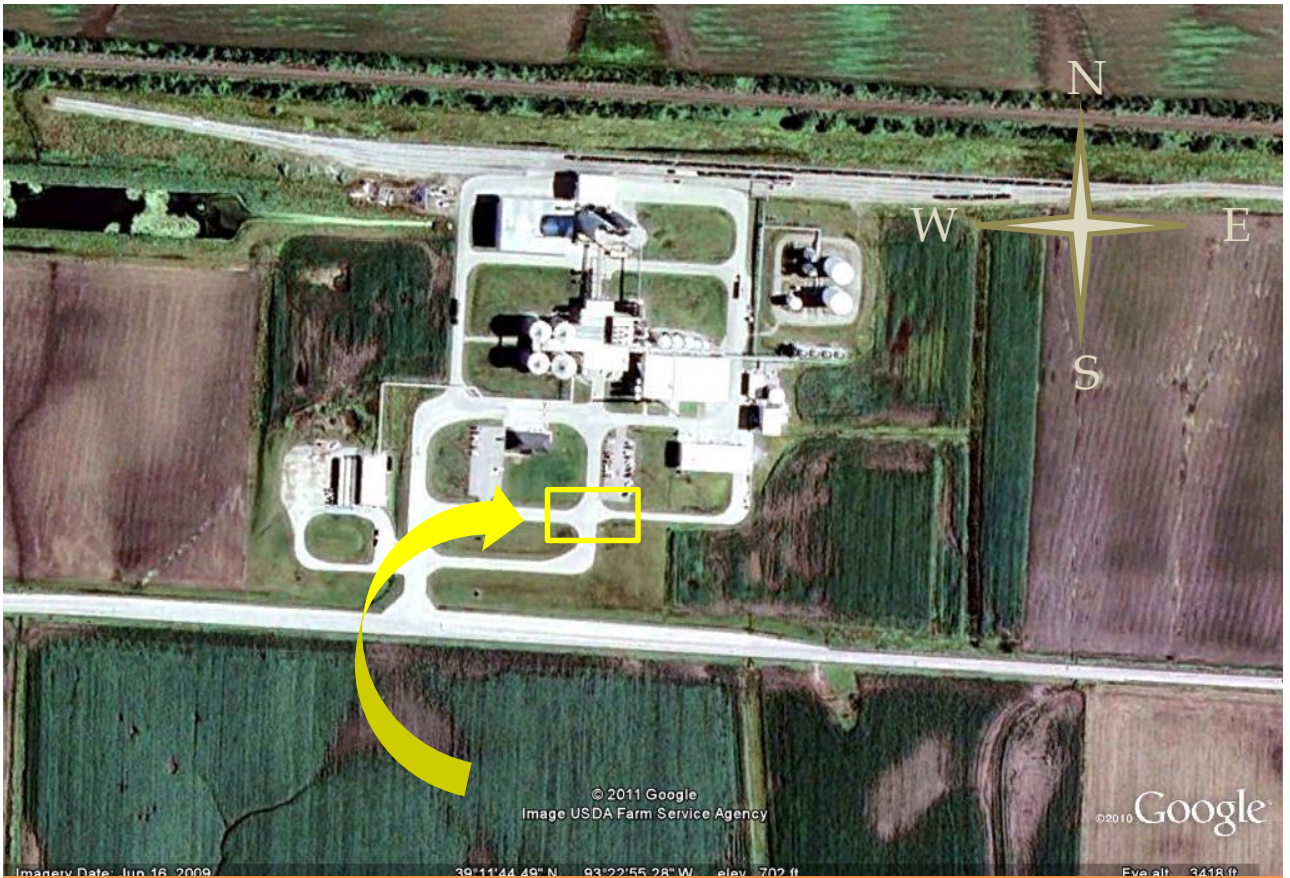


Best Approach	East/west
Obstacles	Power lines north, trees east
Surface	Grass
Notes	100'x200', residential area, public access



# Saline Co. LZ #7

Malta Bend/MidMo Energy LZ (N 39°11.71 W 093°23.06)

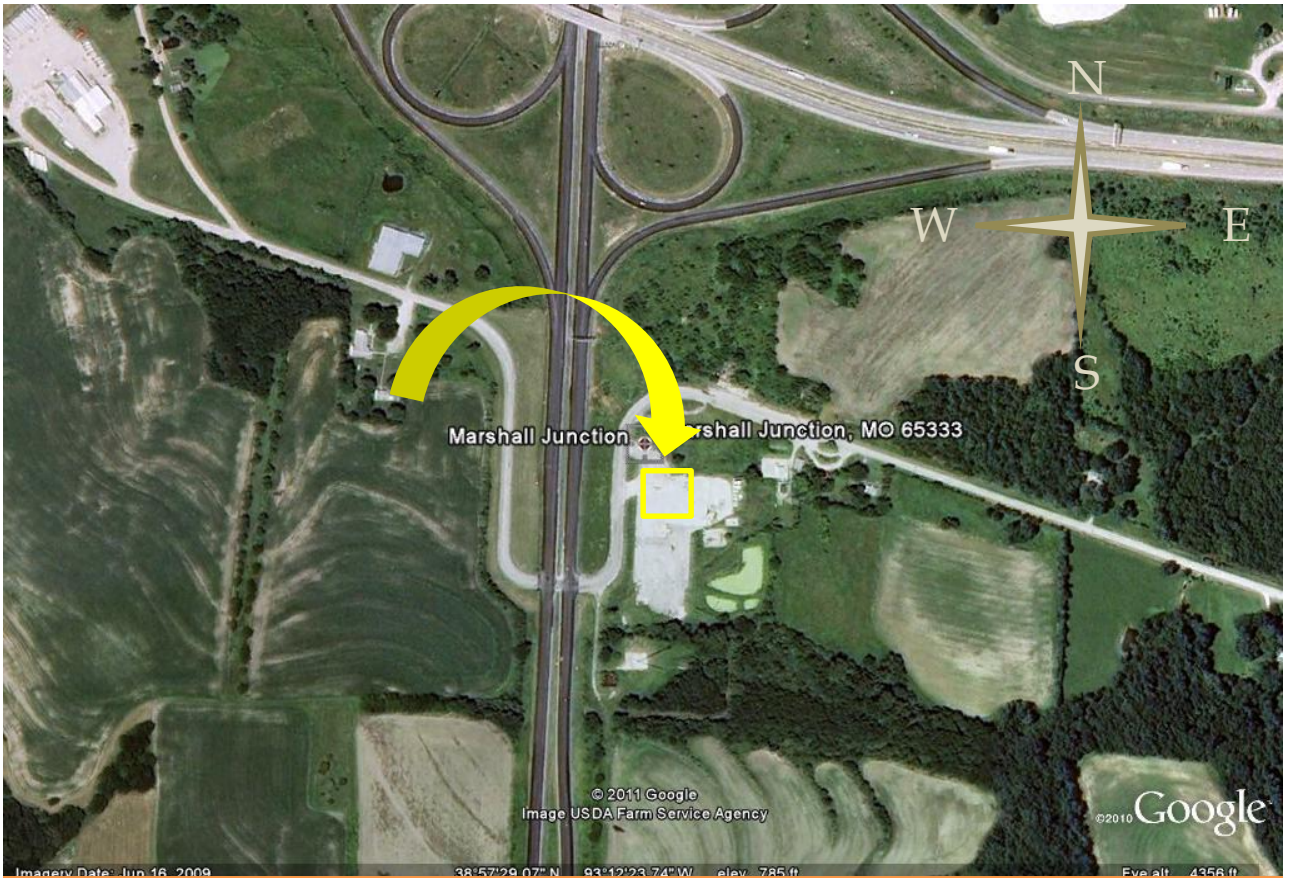


Best Approach	East/west
Obstacles	Light pole north
Surface	Concrete driveway intersection
Notes	One mile east of town, north side of 65 Hwy



# Saline Co. LZ #9

Marshall Junction (N 39°58.48 W 093°12.34)

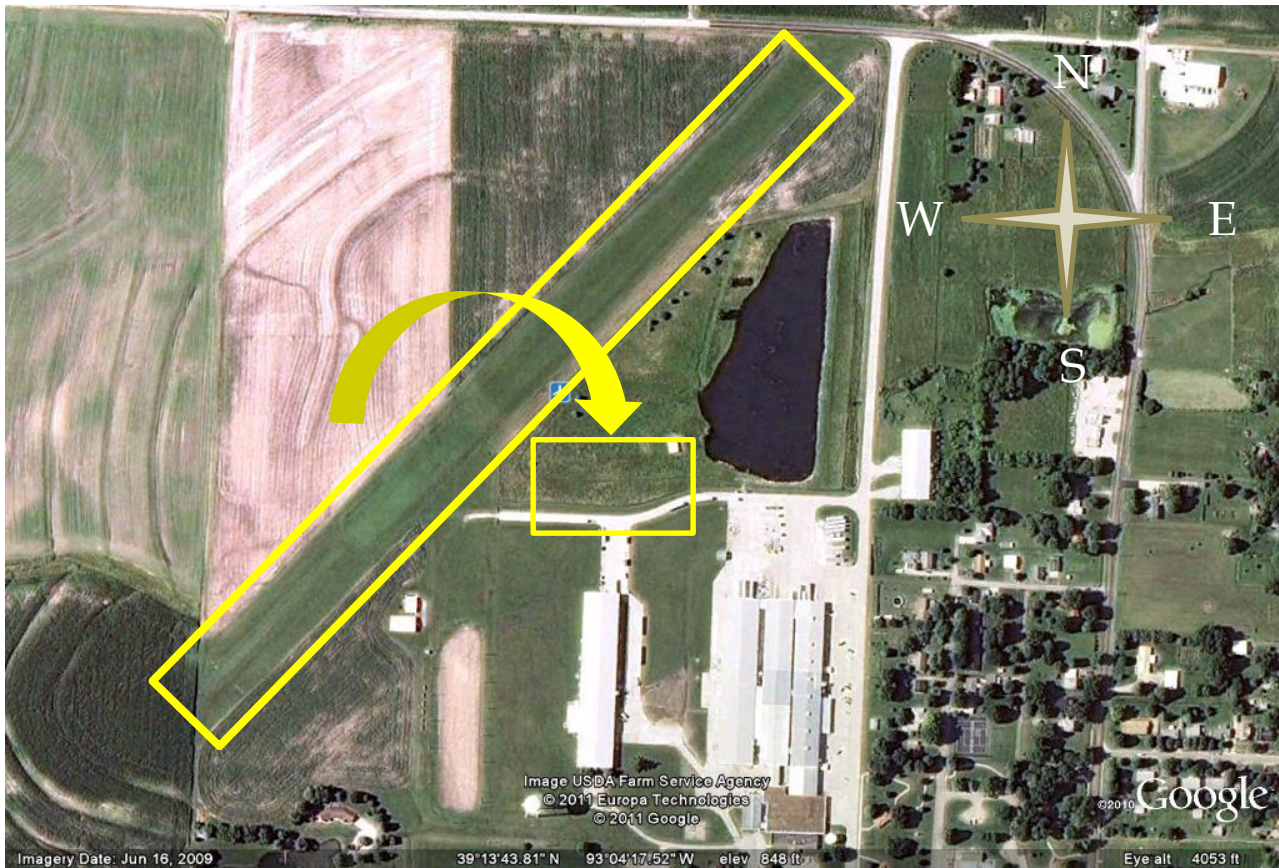


Best Approach	North/south
Obstacles	100' tower east of LZ, power lines east side
Surface	Concrete parking lot or grass median
Notes	Loose debris possible. Lot is not maintained.



# Saline Co. LZ #10

Slater Airport (N 39°13.61 W 093°04.27)



Northeast view



Best Approach	Any
Obstacles	None
Surface	Grass strip or concrete drive, unsecured access
Notes	Slater FD/EMS service area



# Saline Co. LZ #11

Slater Clinic (N 39°13.07 W 093°03.98)



**Southwest view**



Best Approach	South/North
Obstacles	Wires north/south side,
Surface	Basketball court
Notes	Slater FD/EMS service area



# Saline Co. LZ #12

I-70 Medical Center (N 39°58.58 W 093°24.72)



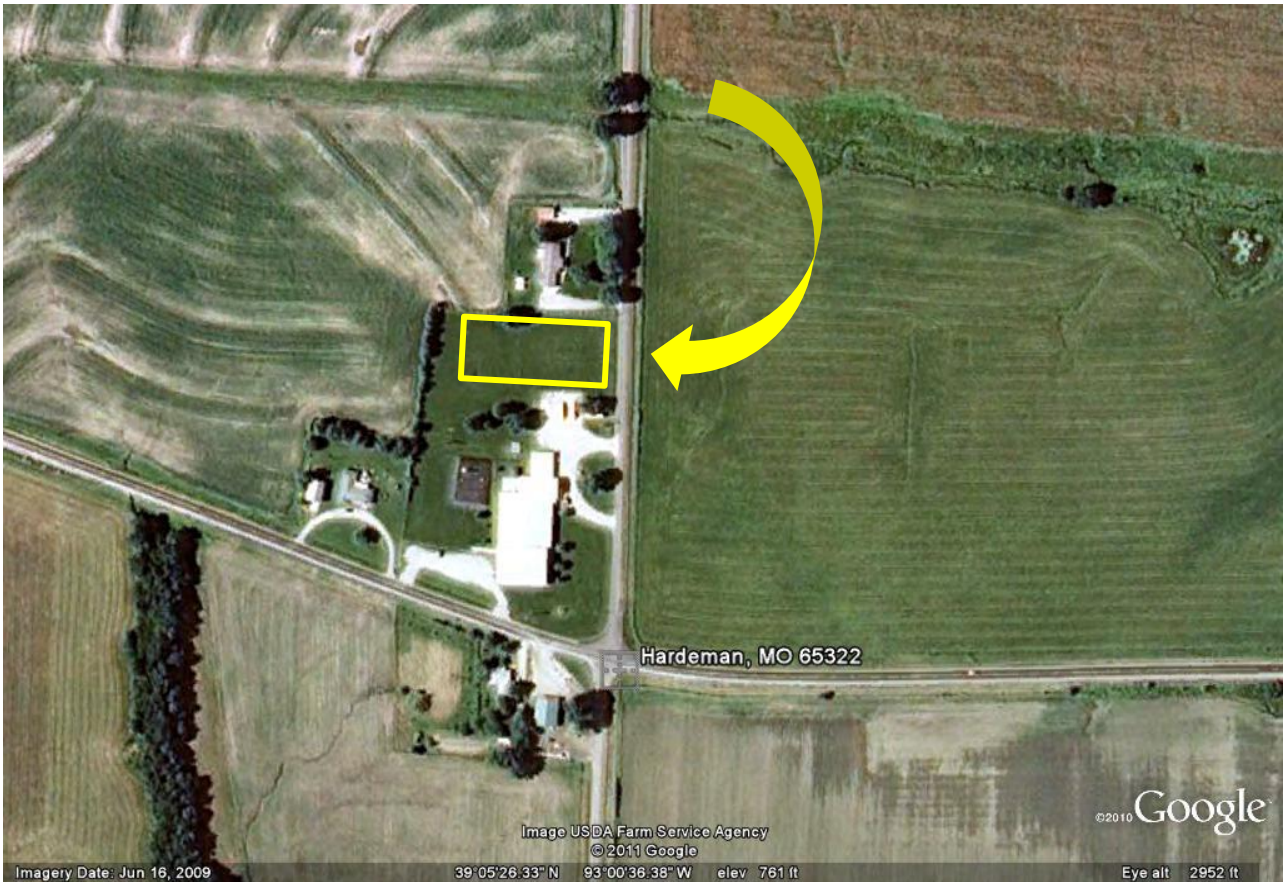
North view



Best Approach	East/West, Northeast/Southwest
Obstacles	Wires southeast, light poles north side
Surface	Lit concrete helipad
Notes	Sweet Springs FD service area

# Saline Co. LZ #13

Hardeman School (N 39°05.42 W 093°00.65)



**West View**



**Northwest View**

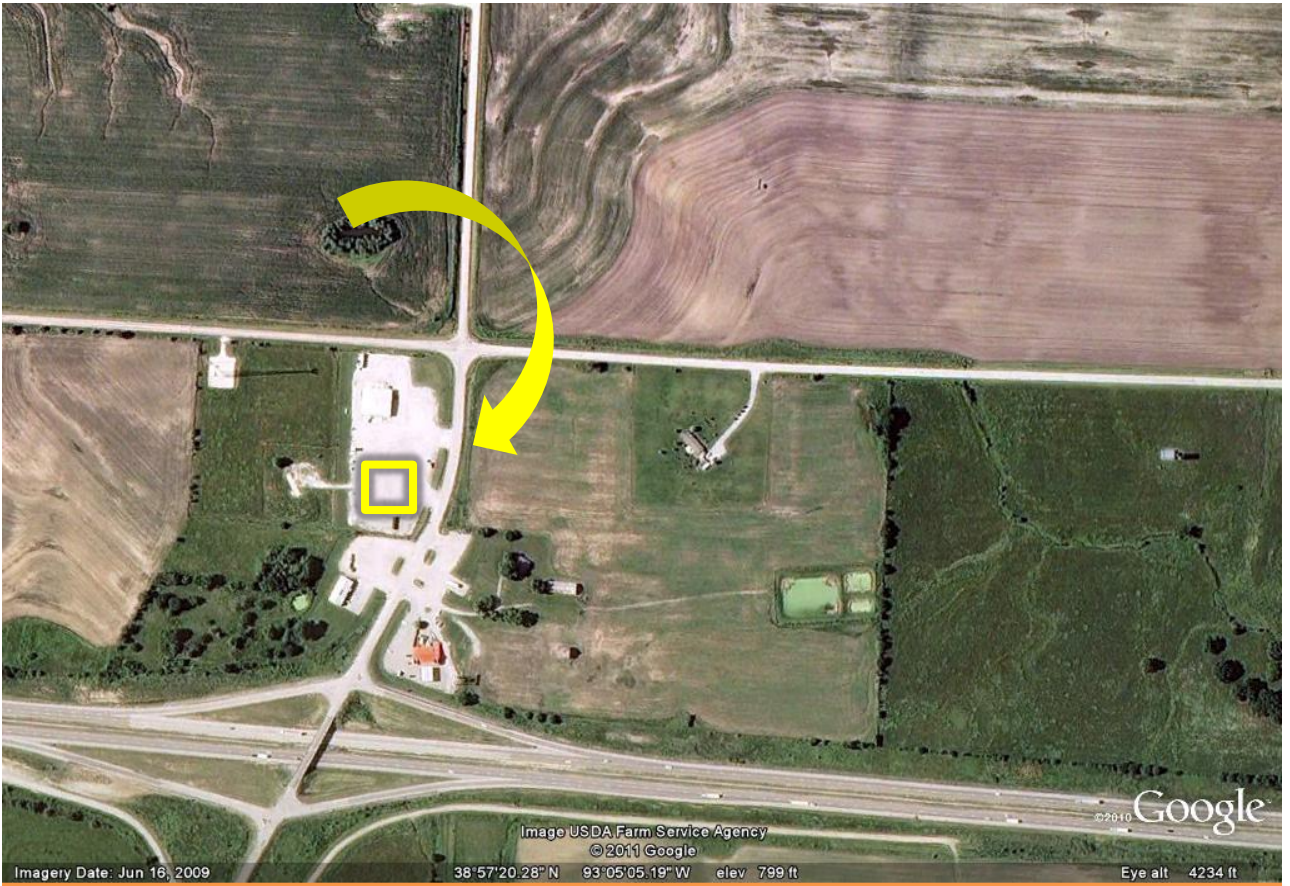


Best Approach	East/west
Obstacles	Wires on east side along road, 20' light pole south side of LZ
Surface	Grass field, unsecured access
Notes	Arrow Rock FD svc area



# Saline Co. LZ #14

I-70 and J Highway (N 38°57.31 W 093°05.27)



**South View**



**Northwest View**

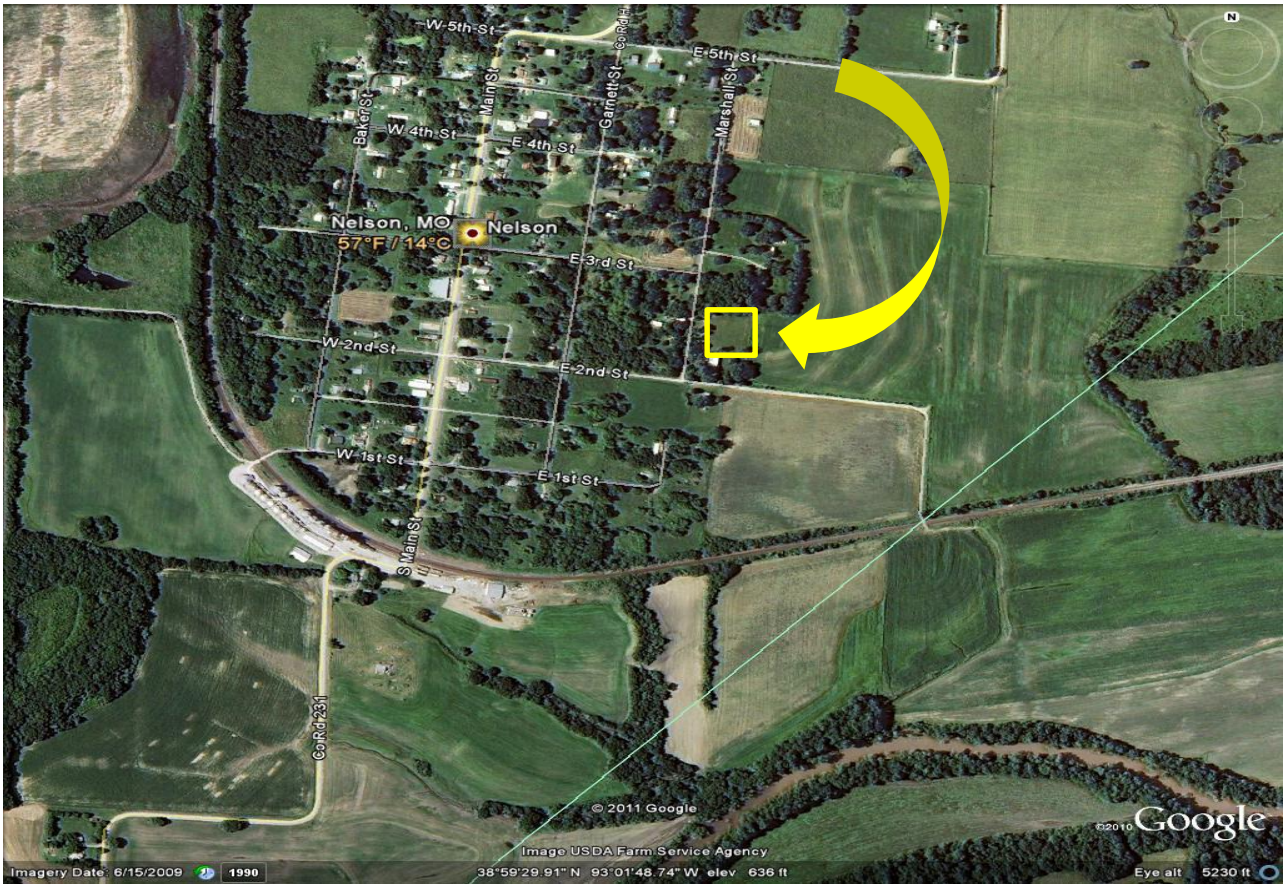


Best Approach	Northeast/Southwest
Obstacles	100' tower northwest, Wires east and south
Surface	Gravel parking lot, unsecured access
Notes	Corrine Trucking Co. lot, Marshall FD service area



# Saline Co. LZ #15

Nelson, MO (N 39°59.60 W 093°01.74)



**East View**



**Southeast View**

Best Approach	East/West
Obstacles	Trees N/W/S sides, 4' fence east side
Surface	200'x200' grass field, unsecured access
Notes	Arrow Rock FD service area